

\$1,349,000*

*Pricing does not include GST or other applicable taxes



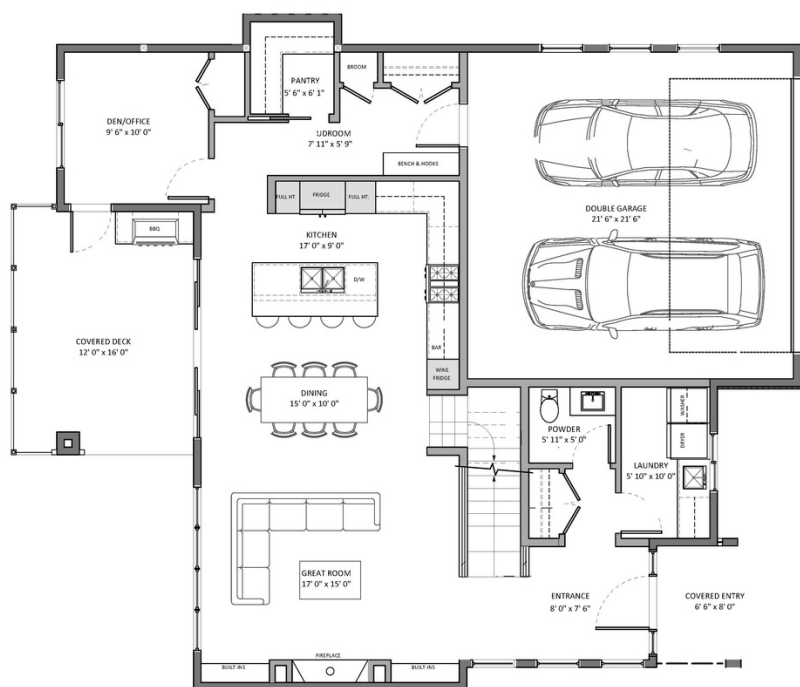
Virtual Tour

PROPERTY FEATURES

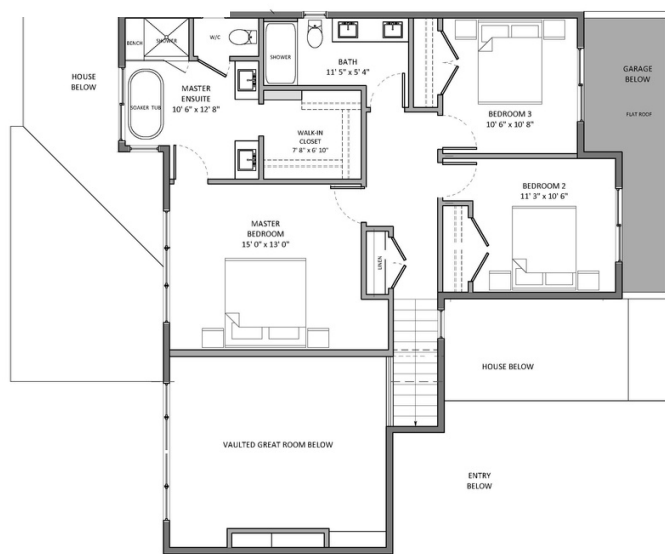
- 3 bedroom + flex
- 2.5 bath
- Walk-in Pantry
- 5 piece ensuite
- Large outdoor living spaces
- Pond views
- 2-Car Garage

Our Sales Centre is Open
3375 Lavender Lane
Tuesday- Saturday, 11 am- 4 pm
Open by Appointment Outside of Posted Hours

Sandra 250.317.3445 Kolby 250.300.4338



Main Floor Area: 1,150 sqft



CONCEPTUAL RENDERING These marketing design drawings are inherently conceptual in nature and are subject to changes and revisions. Builder/Developer reserve the right to change pricing without notice.

CONCEPTUAL RENDERING These marketing design drawings are inherently conceptual in nature and are subject to changes and revisions. Builder/Developer reserve the right to change pricing without notice.